

ADDITIONAL NEOTROPICAL *CEROPLATINAE*

(DIPTERA, MYCETOPHILIDAE)

by

J. LANE

From the "Departamento de Parasitologia,
Faculdade de Higiene e Saude Publica da
Universidade de São Paulo, Brasil"

(Received on 11th, March, 1950)

The present short note is an addition to previous paper (Dusenía, 1 (1): 32-69) on this group and follows the same pattern of work as given in its introduction. In this note three new and one known species are described and illustrated.

We feel that the value of the male genitalia becomes of greater importance in this family and that characters of coloration frequently tend to show great variation in some species.

Platyura (Proceroplatus) puncticoxallis Edwards, 1940.

1940 *Platyura (Proceroplatus) puncticoxallis* Edwards, Rev. Ent., 1: 451.

1950 Lane, Dusenía, 1 (1): 59.

We take this opportunity to illustrate and describe the male genitalia of this species based on our specimens (see Dusenía, 1 (1): 59).

Genitalia: (Fig. 1) Basistyles fused at base, subquadrate, setose. Dististyle shorter than the basistyle, slender, a rod-like filament near base, curved apically and ending in two long internal projections and a short external one. Plate (10th. Sternite?) large and as in figure. Ninth tergites as in figure. Mesosome was not observed.

Platyura (Proceroplatus) guayanasi Lane, 1950.

1950 *Platyura (Proceroplatus) guayanasi* Lane, Dusenía, 1 (1): 59.

We have eight additional males from BRASIL, State of S. Paulo, Burí, XII.1949 (E. I. Cohér col.).

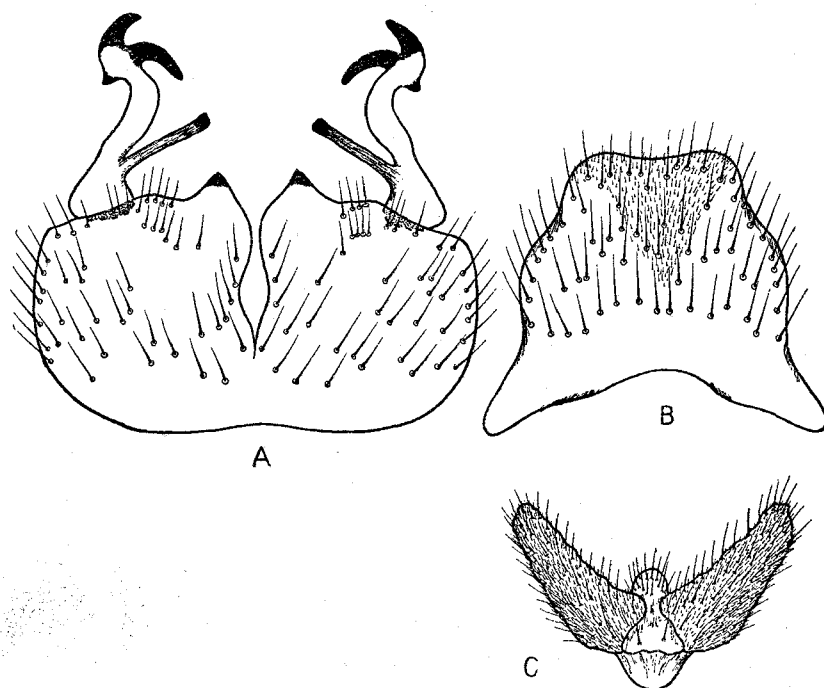


Fig. 1 - *Platyura (Proceroplatus) puncticoxallis* Edwards, 1940. A. Basis-tyles and dististyles. B. Tenth sternites ?, C. Ninth Tergites.

Platyura (Neoplatyura) saparai n. sp.

Length of body 2,8; wing 2,6 mm.

Male - Head: Mouth parts reduced. Palpus yellowish. Clypeus light-brown. Antenna with scape and torus yellowish as well as base of first flagellar segment; the rest of this segment and remaining ones blackish. Occiput blackish with whitish pruinosity; sparsely covered with short, brown setae. Ocelli three; ocellar prominence distinct; lateral ocelli larger than the middle one and quite removed from the eye margin.

Thorax: Yellowish-brown; covered with dark-brown setae and hairs. Scutellum yellowish, the marginal setae black and long. Postnotum light-brown, shining. Pleurae yellowish, only two or three setae behind spiracular sclerite.

Legs: Coxae yellowish. Trochanters brown. Femora yellowish. Tibiae with regular rows of setulae, the setae small. Tarsi darker. Spurs 1-2-2, the external less than half as long as the internal ones.

Wing hyaline. Stem of media obsolete. M.1; 2 and 3 not reaching the apex of wing. M.4 obsolete at base. Cu.2 short and ending quite before the apex of wing. Anal vein shorter than Cu.2. Haltere with yellowish stem and blackish knob.

Abdomen with dark brown tergites, the apex of segments with narrow bands. Sternites yellowish, covered with brown hairs.

Genitalia: (Fig. 2) Basistyle with lobes fused, subquadrate, setose. Dististyle with two lateral lobes which are distinctly longer than the basistyle and setose. Other differentiated structures at apex as can be seen in figure 2. Mesosome about twice the length of basistyle, attenuated and with structures as in the figure.

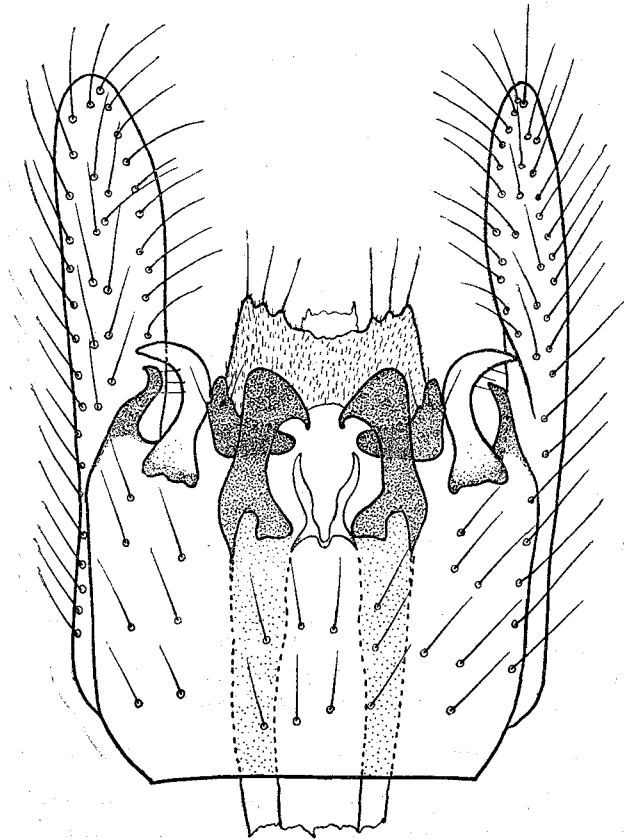


Fig. 2 - *Platyura (Neoplatyura) saparai* n. sp. Male genitalia.

Types - Holotype male; paratypes eight males. Registered under numbers 8611 to 8616.

Type locality - BRASIL, State of S. Paulo, Morumbi, XI.1949 (E. I. Coher and I. Ortiz col.).

Subgenus *Xenoplatyura* Malloch, 1928.

1928 *Xenoplatyura* Malloch, Proc. Lin. Soc. N. S. Wales, 53:

1928 *Truplaya* Edwards, ibd., 54: 170.

The character of a few black hairs being present or absent in front of antenna has, to us, only specific importance. Such being the case we can not maintain the subgenus *Truplaya* so it is herein considered a synonym of *Xenoplatyura*.

Platyura (*Xenoplatyura*) *coheri* n. sp.

Length of body 4,2 mm; wing 4 mm.

Male - Head: Mouth parts reduced. Palpus with brown segments. Clypeus light-brown, setose. Antennae with scape and torus yellowish; first flagellar segment yellowish at base, the apex blackish as well as the remaining segments. Occiput brown, ocellar prominence blackish-brown, ocelli triangularly placed and removed from eye margin.

Thorax: Mesonotum light-brown, evenly covered with short hairs. Scutellum yellowish, with a marginal row of twelve to fifteen setae. Postnotum prominent, nude, brown. Pleurae yellowish, nude.

Legs: Coxae yellowish. Femora yellowish. Tibiae with irregular setulae on basal portion, on the apical one they are regularly distributed in rows. Spurs 1-2-2, the internal one about three times longer than the external one and spinose. Tarsi dark; fore basitarsus slightly longer than corresponding tibia.

Wing unmarked except for a dark spot on apex involving radius. Veins not setulose; M. 2 and M. 3 not reaching apex of wing. Cu.2 and An. long but apparently not reaching apex of wing. Haltere with yellowish stem and blackish knob.

Abdomen dorsally blackish-brown, ventrally yellowish.

Genitalia: (Fig. 3) Basistyle and dististyle small, retracted. Dististyle with several appendages as in figure. Mesosome large and quite longer than basistyle and dististyle, the apex as in figure. Ninth tergites small, setose.

Female - Unknown.

Type - Holotype male; registered under number 8627.

Type locality - BRASIL, State of Goiás, Corumbá, XI. 1945 (M. P. Barretto col.).

The name of this species is given in honor of my friend Mr. E. I. Coher.

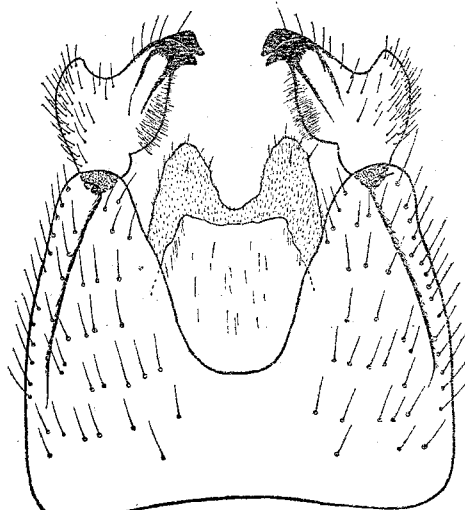


Fig 4

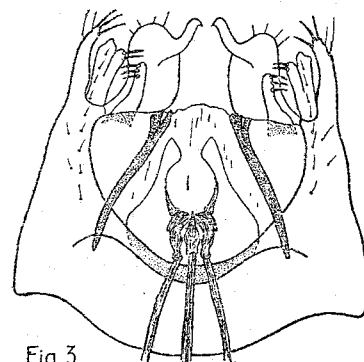


Fig 3

Fig. 3 - *Platyura (Xenoplatyura) coheri* n. sp. Basistyles and dististyles, showing upper portion of mesosome. Other structures omitted.

Fig. 4 - *Platyura (Platyura) maiapenai* n. sp. Basistyles and dististyles. Mesosome and ninth tergites.

Platyura (Platyura) maiapenai n. sp.

Length of body 5 mm; wing 5 mm.

Male - Head: Mouth parts short. Palpus yellowish, covered with short, brown setae. Antenna with scape and torus yellowish; first flagellar segment nearly completely yellowish, segments getting progressively darker until the sixth, then they are completely blackish to apex; antennal segments flattened. Occiput yellowish, ocellar prominence blackish and protuberant; middle ocellus very small; covering formed by very short setae.

Thorax: Mesonotum orange-yellow; evenly covered with short setae. Scutellum yellowish with quite dense marginal setae which are blackish. Postnotum pointed, yellowish, darker in the middle where there is short pilosity. Pleurae yellowish.

Legs: Coxae and femora yellowish. Tibiae and tarsi darker. Fore basitarsus about one fourth longer than corresponding tibia. Spurs 1-2-2, the external about two-thirds the length of the internal one.

Wing: Unmarked, yellowish, blackish toward the apex. Veins reaching margin except Cu.2 and Anal. Haltere with yellowish stem and blackish knob.

Abdomen yellowish, with large apical black bands on tergites I-V; tergite VI blackish also; genitalia yellowish.

Genitalia: (Fig. 4). Basistyles with the lobes fused, broad, sparsely setose. Dististyle about half as long as basistyle, triangularly shaped, internal angle ending in two very strongly sclerotized beaks; setose externally and pilose internally. Mesosome very weakly sclerotized. Ninth tergites two fused lobes which are spiculate and sparsely setose.

Female - Unknown.

Types - Holotype male; paratypes two males. Registered under numbers 8621 to 8623.

Type Locality - BRASIL, State of S. Paulo, Morumbi, XI.1949 (J. Lane & E. I. Coher col.).

Drawings made by E. B. Ferraz

SUMMARY

The present short note is the continuation of a previous paper (see Dusenía, 1 (1): 32-69). In it the author describes and illustrates the genitalia of *Platyura* (*Proceroplatus*) *puncticoxallis* Edwards, 1940 and describes the following new species: - *Platyura* (*Neoplatyura*) *saparae* n. sp., *Platyura* (*Xenoplatyura*) *coheri* n. sp. and *Platyura* (*Platyura*) *maiapenai* n. sp. The genitalic characters are sufficient to separate the new species from known ones.

RESUMO

A presente breve nota é uma continuação de um trabalho prévio (vide Dusenía, 1(1): 32-69). N'ela o autor descreve e ilustra a genitália de *Platyura* (*Proceroplatus*) *puncticoxallis* Edwards, 1940 e descreve as seguintes espécies novas: - *Platyura* (*Neoplatyura*) *saparae* n. sp., *Platyura* (*Xenoplatyura*) *coheri* n. sp. e *Platyura* (*Platyura*) *maiapenai* n. sp. Os característicos encontrados na genitália do macho são suficientes para separar as novas espécies de formas já conhecidas.